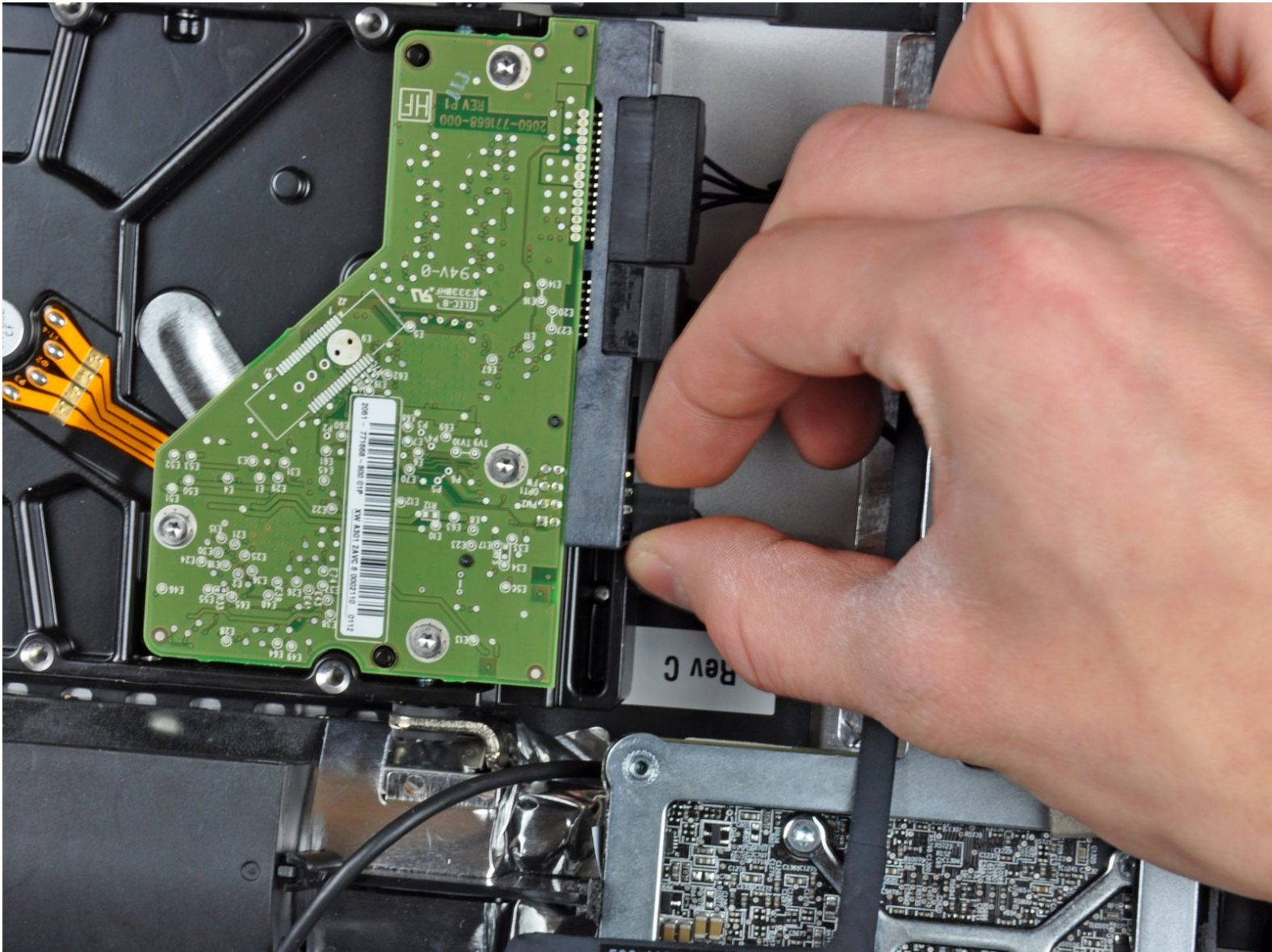




# iMac Intel 27" EMC 2309 and 2374 Hard Drive Replacement

Prereq only

Written By: Andrew Bookholt



# INTRODUCTION

Prereq only



## TOOLS:

- [Heavy-Duty Suction Cups \(Pair\)](#) (1)
- [Paper Clip](#) (1)
- [T10 Torx Screwdriver](#) (1)
- [T8 Torx Screwdriver](#) (1)
- [Tweezers](#) (1)

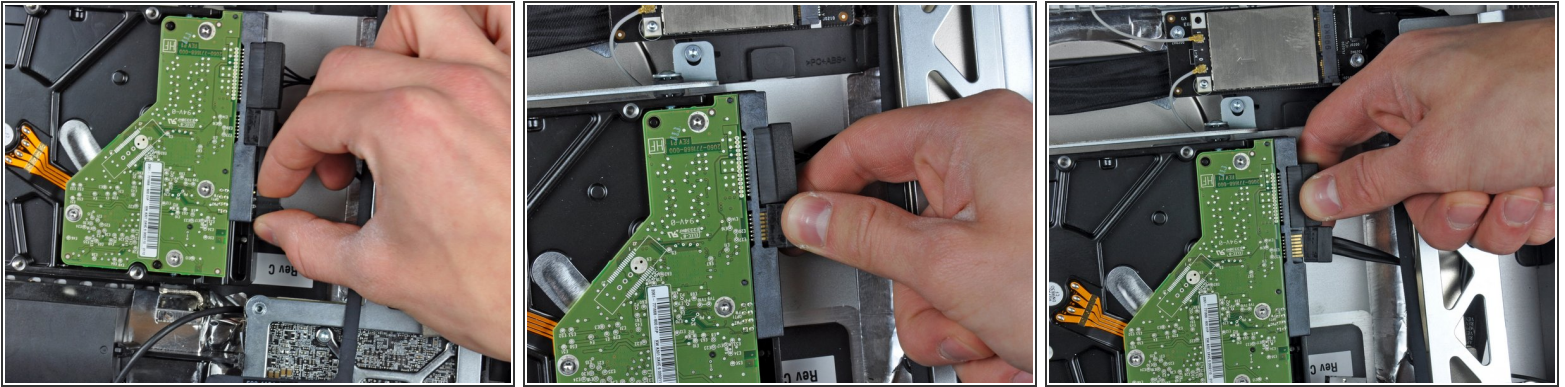


## PARTS:

- [iMac Intel 21.5" and 27" Late 2009-Mid 2010 SSD Upgrade Bundle](#) (1)
- [Universal Drive Adapter](#) (1)
- [1 TB SATA Desktop Hard Drive](#) (1)
- [2 TB SATA Desktop Hard Drive](#) (1)
- [3 TB SATA Desktop Hard Drive](#) (1)
- [4 TB 3.5" Hard Drive](#) (1)
- [2 TB SSD Hybrid 3.5" Hard Drive](#) (1)
- [1 TB SSD Hybrid 3.5" Hard Drive](#) (1)
- [4 TB SSD Hybrid 3.5" Hard Drive](#) (1)



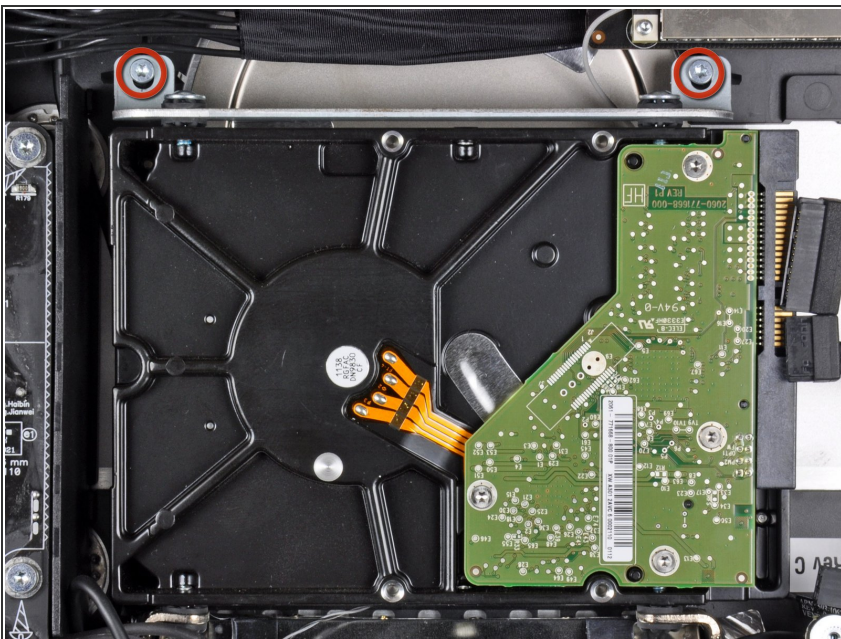
## Step 1 — Hard Drive



**⚠** Before disconnecting the thermal sensor cable, take note of its orientation. It is extremely important to reinstall the connector in the current orientation so the fans will not run at full speed. If you have multiple pins on your replacement hard drive, put the connector closest to the SATA connections and closest to the PCB board.

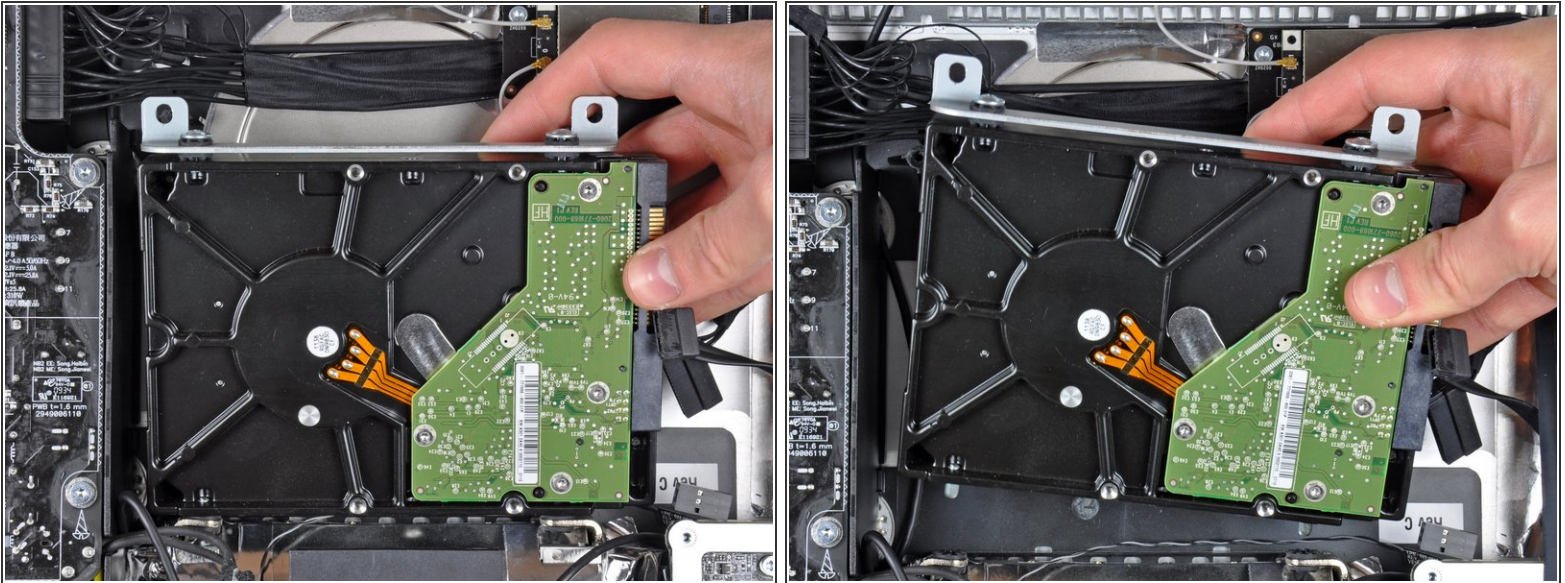
- Disconnect the thermal sensor, SATA power, and SATA data cables by pulling their connectors away from the sockets on the hard drive.

## Step 2



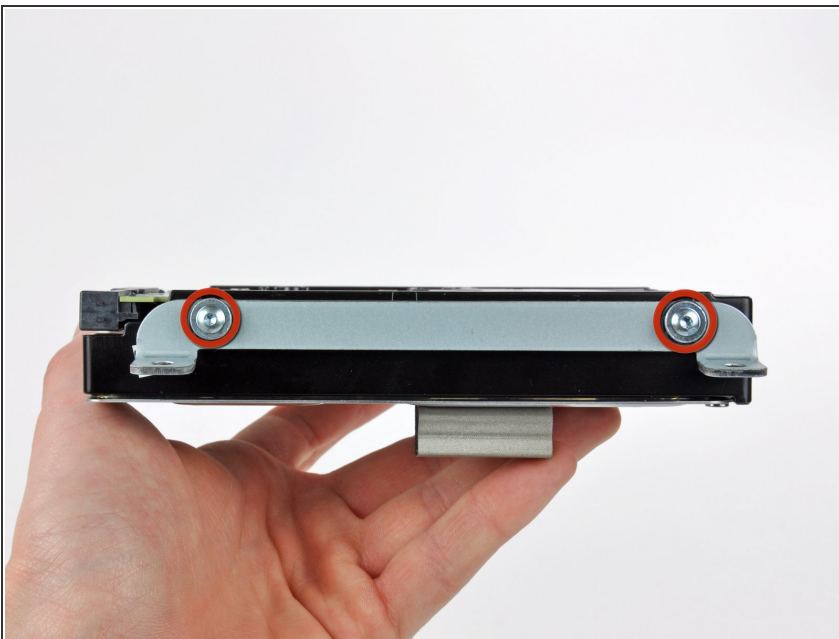
- Remove the two T10 Torx screws securing the upper hard drive bracket to the outer case.

### Step 3



- Slightly rotate the hard drive away from the outer case.
- Lift the hard drive off its two lower positioning pins and remove it from the outer case.

### Step 4



- Remove the two T8 Torx screws securing the upper bracket to the hard drive.
- Remove the upper bracket from the hard drive.



## Step 5



- Remove the two T8 Torx pins from the other side of the hard drive.

## Step 6



- Carefully peel off the piece of EMI foam attached to the front of the hard drive.
- ☑ Don't forget to transfer this to your new hard drive.

To reassemble your device, follow these instructions in reverse order.